

OCTOBER - NOVEMBER 2018
NEWSLETTER

NOOSA & DISTRICT
LANDCARE



Noosa & District
Landcare

Landcare Linkup

NEXT LANDCARE LINKUP 2018 MONTHLY
ECO-CONVERSATIONS



Thursday 18th October, 5-7pm:
WHAT'S THE BUZZ IN KIN KIN?
with Chris Fuller, Kin Kin Native Bees

A hive of Australian native stingless bees is a must for any avid backyard veggie grower, market gardener or hobby farmer. They will pollinate your fruit trees and veggies, but won't sting you in the process! You and your children can get up close to watch them going about their business. Join Chris to explore the enchanting world of the native bee.

BOOK HERE

Thursday 15th November, 5-7pm
END OF THE CANE TOAD?
with Rob Capon, Professorial Research Fellow, UQ, Institute for Molecular Bioscience

Toads! They are a nightmare for all of us, especially those who love our native wildlife. Join us to learn about an innovative cane toad tadpole trapping technology that uses a natural toad pheromone to lure toad tadpoles into a trap. Rob will also tell us about the Cane Toad Challenge, a community engagement and citizen science program.

BOOK HERE

Book and pay for Noosa Landcare events by clicking here.

These monthly events are free for Noosa Landcare Members and Bushlandcare Program volunteers and \$10 for general entry.

General Manager Muses

Looking Back

BY PHIL MORAN

At a presentation recently this picture gave me cause to reflect on our region. Noosa Parade in the foreground, taken in 1973. It looks like something you would see at the Gold Coast!



How fortunate we are in Noosa to have had a Council that listened to community concerns regarding protecting our environment and lifestyle. Many good people lobbied hard for Council to not go down the high-rise and development route.

An excerpt from Noosa Parks Association website is telling:-

“In late 1962, a local GP, Arthur Harrold, along with a small group of concerned Noosa residents, created Noosa Parks Association with the express intent of campaigning to prevent a road being built along what is now the coastal walking track to Alexandria Bay. Such a road would have confined the headland section of Noosa National Park to being landlocked. History shows that the NPA-led community activism prevented this from occurring.”

It is also interesting to look at the vegetation [or lack of it] on the hill in the rear of the photo. I remember this was a banana plantation at one stage. Looking at the same scene now...yes, there is development, but it is not high-rise, and we have a wonderful, preserved Noosa National Park. Early photos of Kin Kin, Cooran and Pomona also tell a story. Much vegetation was cleared for farming enterprises. People moving to our shire in recent times often do so for both our environment, and the lifestyle. Many new landholders get in contact with Noosa & District Landcare Group to learn about their properties; the weeds and the native plants and animals that live there. In the last year alone NDLG conducted over 40 visits to private land to talk to people about the biodiversity and landscape issues on their land. The remaining farming is much more sustainable, with farmers taking initiatives to protect waterways, remove weeds and often with better production as a result.

The number of Land for Wildlife properties is testament to desire of residents to look after our Land. I hope to see more Voluntary Conservation Agreements [VCA] signed over the next year also, as I believe that conservation on private land is the way of the future.

Looking back, can lead to Looking forward



Keeping it in Kin Kin

By Rae O'Flynn

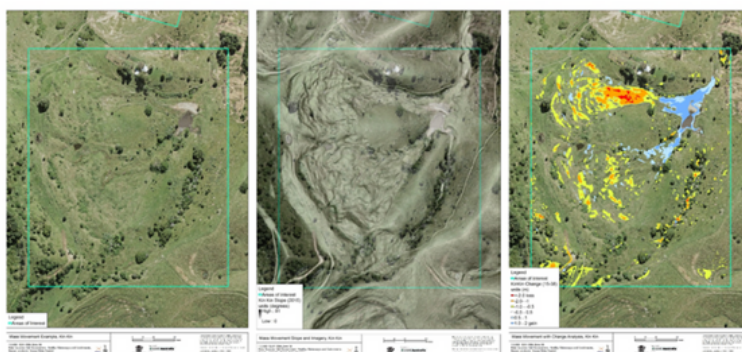
As newly appointed Keeping It in Kin Kin project manager I would like to give you a brief overview of what we are up to in the beautiful hinterland district.

For those who are unaware, LIDAR imagery has been used to assess the amount of movement of soil and sediment through the Kin Kin district. LIDAR stands for Light Detecting and Ranging, which basically means a light beam is shot from a satellite, which bounces back from the ground and gives a height measurement. Using data collected in 2008 and comparing with data collected 2015, with some analysis by smarter people than myself, the measurement of soil movement can be discerned to within a 3m accuracy. The type of erosion that has occurred can also be discerned. I have included an example photo to illustrate this (*Blue meaning deposition and red to yellow, loss or erosion*).

What the analysis has enabled NDLG to do is decide areas of priority and where to begin on ground works to remediate the erosion issues within the district. Phase 2 of the project is under way and I am contacting landowners in priority sections to site assess areas of erosion showing up on the map and develop remediation projects to rectify issues.

Developed by:
Shannon Mooney *Heathy Land & Water*
Rae O'Flynn *Noosa & District Landcare*

LiDAR Analysis – DEM of Difference



Left – Aerial Photography
Middle – LiDAR Slope
Right – LiDAR Change

This project is a partnership with NDLG, Noosa Biosphere, Noosa Council, Healthy Land & Water, NICA, Country Noosa, The Thomas Foundation, Kin Kin Community Group, Noosa Parks Association and Government body Caring for Our Country.

If you are interested in further information on the Keeping it in Kin Kin Project please contact Rae O'Flynn at projects5@noosalandcare.org or (07) 5485 2155.

Lake Macdonald Water Quality Improvement Project

By Ilana Kelly

Last month Noosa Landcare commenced a new project in the Lake Macdonald Catchment area called the '*Lake Macdonald Water Quality Improvement Project*'. This is a Seqwater and Noosa Landcare partner project aiming to improve water quality within the Lake Macdonald Catchment.

Lake Macdonald is fed by a catchment area of 42km², which encompasses three major creeks that flow into the lake (Six-Mile Creek, Dath Henderson Creek and Frogmouth Creek). The three creeks, their connecting tributaries, and the lake itself, are surrounded by a blend of land uses from the production of livestock to rural residential living. Working closely with landholders, we will implement projects to prevent sources of sediment, nutrients and pathogens from entering into the catchment's waterways and the lake.



This is a great opportunity for landholders to improve the productivity of their property while improving and protecting waterway health for the wider community. Projects we look to implement in the catchment area include the installation of waterway fencing and off-stream water sources for stock, waterway and lakefront vegetation planting, erosion repair and weed control. The project will provide landholders with advice, combined with financial and/or physical support to implement water quality improvement strategies on their property.

In the next month we will be starting the first lot of project activities in the catchment, we are very grateful of the enthusiastic support that Lake Macdonald landholders have shown to the project thus far and their commitment to improve waterway health.

If you're interested in being a part of this project or require more information, please feel free to contact Project Officer Ilana Kelly at projects4@noosalandcare.org or (07) 5485 2155.





Noosa Botanical Gardens Plant Fair

By Owen Snowden

With thanks to Jill Brownlee and the Friends of Noosa Botanical Gardens we had our first official stall this year at the Noosa Botanical Gardens Plant Fair 2018.

Having no idea what to fully expect we gathered as many plants and varieties as possible. Setting up the stall was more involved than anticipated, however with the help of our fantastic trainees we were ready in time for the first wave of eager gardeners. Over the next six hours we were run off our feet showcasing the beauty, versatility and resilience of our local native species.

Our involvement in this year's event let us introduce ourselves into the wider community helping share our passion for plants and the ecology of the Noosa biosphere.

Photo credit
Top: Owen Snowden
Below: Phil Moran





CHECK OUT THIS FUNGI!

By Ered Fox

In a past life as a Bushland Management Operator, while working for the newly amalgamated Sunshine Coast Council, I came across this curiosity. I found this strange insect approximately 20 km west of Eumundi in Cedar Creek while rebuilding a cattle fence bordering a Council Nature Reserve. Plants have been my main interest during my time in natural area management, so as I scanned the forest floor during my lunch break I was baffled as to what it could be.... Could this be a newly discovered Moth species?

There was only one thing to do and that was to send the sample off to the Queensland Museum for analysis. Here was the reply to my submission:

"I have been informed by our Curator Chris Burwell that the insect you have discovered is a Hawk Moth. It has been affected by a fungus which eats it (Entomophagus). It is a very interesting specimen and the first time I have ever seen it, it certainly had the non-entomologists in the Museum guessing!"

Some fun facts:

Entomo= insect

Phagous= eating, feeding on

Photo credit
Top: Alex Wild
Right: Ered Fox

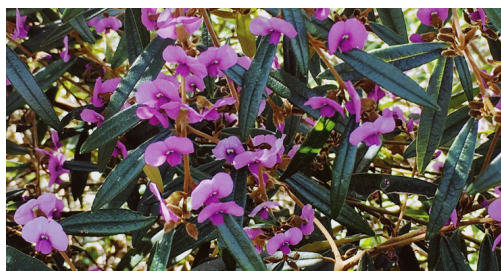
An entomopathogenic fungus is a fungus that can act as a parasite of insects and kills or seriously disables them.



Nature always throws you some surprises if you take the time to have a look around....

SEED COLLECTION

*What's coming into
seed this Spring?*



HOVEA ACUTIFOLIA

Seed is ready for collection when it turns brown after flowering. Normally this occurs in Spring from October-December.



SYZGIUM SPECIES

Lillipilli species fruit all year round in a variety of colours and sizes. Fruit should be collected when ripe from the tree or ground.



PULTENAEA SPECIES

Similar to the Hovea seed is ready for collection when it turns brown in Spring.

Photo credit:
All: Jasmine Connors

THINGS TO KEEP IN MIND WHEN COLLECTING SEED

by Jasmine Connors

When collecting native seed keep in mind that this is also food for our native wildlife. Only collect 20% of available ripe seed or fruit.

Take a sample of leaf, stem and flowers so we can clearly identify which species it is.

Please drop off to either of our Landcare locations in Pomona. (See last page for the addresses)



PLANT OF THE MONTH

CINNAMOMUM OLIVERI

OLIVERS SASSAFRAS



By Jo Nicholls

This large rainforest tree, from the Lauraceae (*Laurel*) family, reaches up to 20 meters and produces small creamy white flowers and blue or black berries. The fruits are a great source of food for many native bird species. *C. oliveri* thrives with fertile soil and ample water but will tolerate poorer conditions, naturally occurring within subtropical highland and lowland rainforests, often near streams.

The sarsaparilla scented leaves have wavy edges and are a distinctive feature of this species. Timber cutters refer to this tree as Camphor Wood because of its fragrant wood. The aromatic scent of this timber will last for many years after been cut.

Leaves are opposite and usually 8-15cm in length. They are green and glossy with a paler underside and contain the oil of camphor. Flowers are cream to green in colour from October through to November. Food plant for the larval stages of the Blue Triangle Butterfly (*Graphium sarpedon*)

WEED OF THE MONTH

ARISTOLOCHIA ELEGANS DUTCHMANS PIPE



By Jo Nicholls

Dutchmans Pipe (*Aristolochia elegans*) is a very fast-growing environmental weedy vine that made its way into suburban backyards as a novelty species. It is a deadly alternative to the Richmond Birdwing Butterfly Vine (*Pararistolochia praevenosa*). The endangered Richmond Birdwing Butterfly (*Ornithoptera richmondia*) lay their eggs upon the Dutchmans Pipe vine only to be fooled, as the larvae hatch they begin to feed and are poisoned.

The Dutchmans Pipe prefers moist fertile soils making it a perfect invader to native rainforest habitats. The striking vibrant reddish purple flowers have white and yellow striping and are shaped like the traditional Dutchman's pipe giving it its common name. They are very distinctive due to the shape and colour in amongst the habitat.

Leaves are approximately 75mm long, glossy green and heart-shaped and usually found in dense clusters, forming a dense matt. The stems are found twinning and coiling their way around a host structure.

Dutchman's pipe is preferably removed manually from the ground, ensuring root and crown material are all collected.



Local Events

23rd September - 10th November 2018 Mary River Month
<http://mrccc.org.au/mary-river-month/>

14th October Glossy Black-Cockatoo Birding Day
<https://www.noosa.qld.gov.au/-/help-the-glossy-black-cockatoo-on-october-14>

18th October Landcare Link-up Workshop Series - What's the Buzz in Kin Kin with Chris Fuller, Kin Kin Native Bees
See Page 2 for further details

19th - 21th October Clean Up Double Island Campaign
<https://www.facebook.com/surfrider.coast/>

22-28th October Aussie Backyard Bird Count
<https://aussiebirdcount.org.au/>

25th - 28th October Noosa International Film Festival
<https://www.niff.com.au/>

15th November Landcare Link-up Workshop Series -End Of The Cane Toad? - with Rob Capon, Institute of Molecular Bioscience, University of QLD
See Page 2 for further details

18th November Noosa Biosphere Day in Kin Kin
<http://www.countrynoosa.com/event/biosphere-celebration/>

23rd November Noosa & District Landcare AGM
See overpage for further details

Rural Futures Centre
65 Pavilion Street, Pomona QLD 4568

Retail Nursery
Station St, Pomona QLD 4568 (*Opposite the Pub*)

© Copyright 2018 Landcare Noosa and District
All Rights Reserved
www.noosalandcare.org
info@noosalandcare.org



GRASS TREES
XANTHORRHOEA
JOHNSONII

For sale at our retail
nursery in Pomona.

PO BOX 278
POMONA QLD 4568

STATION STREET
POMONA QLD 4568
P: (07) 5485 2468
ADMIN@NOOSALANDCARE.ORG
F: (07) 5485 0413
WWW.NOOSALANDCARE.ORG

INVITATION

ANNUAL GENERAL MEETING AND BBQ LUNCH

Members and interested stakeholders are invited to attend our Annual General Meeting BBQ Lunch where we will also elect the next Management Committee.

Date: Friday 23rd November 2018

Time: 11.30am to 1.30pm

Where: Futures Centre, 65 Pavilion Street, Pomona 4568

Please RSVP for catering purposes to Kim Maddison by 14.11.18
by phoning 07 5485 2155 or emailing admin@noosalandcare.org

Nominations for Management Committee 2018/19

Nominations are hereby called for current financial members who are interested in joining the management committee of Noosa & District Landcare Group Inc.

Committee Members will be appointed at the Annual General Meeting of
Noosa & District Landcare Group Inc on 23.11.18.

Members of the Management Committee must be members of the organisation.
Membership can be paid by cheque, by direct deposit, credit card over
phone 07 5485 2468 or via our website at www.noosalandcare.org

Nomination forms, as follows, are to be completed and returned to:



The Secretary (Geoff Black)
Noosa & District Landcare Group Inc.
PO Box 278
Pomona Qld 4568
admin@noosalandcare.org



PO BOX 278
POMONA QLD 4568

STATION STREET
POMONA QLD 4568
P: (07) 5485 2468
ADMIN@NOOSALANDCARE.ORG
F: (07) 5485 0413
WWW.NOOSALANDCARE.ORG

Please use this section if you are unable to attend the AGM and wish to appoint someone who is attending the AGM to vote on your behalf

Appointment of a Proxy

I, of
....., being a member of the
Association, appoint, as my proxy vote on my
behalf at the (Annual) General Meeting of the Association, to be held on

Signed this Day of 2018

Signature

Use this section to nominate someone for a position on the NDLG Management Committee

Nomination Form

I,(Name of Proposer) being a member of Noosa & District
Landcare Group Inc. wish to nominate(Name of Member
being nominated) as a member of the Management Committee of the Noosa & District Landcare
Group Inc.

Sign & print name below

Member nominated

Proposer

Seconder

***Please return forms to The Secretary, NDLG, PO Box 278, Pomona Qld 4568
or by email to admin@noosalandcare.org or in person at 65 Pavilion Street, Pomona 4568***
