



Noosa & District
Landcare

Annual Report 2024-2025



We acknowledge the Traditional Owners of this country and their continuing connection to land, waters and sky.

We pay respect to their elders past, present and emerging and to the pivotal role that Aboriginal and Torres Strait Islander people continue to play in caring for country across Australia.

Table of Contents

02

Our Aims

03

What we do

04

Who we work with

05

Management Committee

07

Chairperson's report

09

Treasurer's report

10

General Manager's report

11

Business and Partnerships Manager's report

13

Administration Team report

14

Production Nursery report

15

Hinter Hub report

17–32

On-ground program and project reports

33

Training

36

Events



Noosa & District
Landcare



Noosa & District Landcare Group

Since its inception in 1991, Noosa & District Landcare has been operating as a community non-for-profit organisation supporting the restoration of Noosa and surrounding regions.

Unlike many traditional landcare groups, our business model has evolved so that we can provide a range of professional, fee-for-service work and project delivery that supports our community engagement and investment. Which means, you can be sure that your dollar is not only getting the vital work done, but is also educating a new generation of landcarers at the same time.

Our vision

Our region is an abundant, biodiverse landscape that supports flora, fauna and people in harmony.

Our mission

To promote sustainable natural resource management and conservation through environmental stewardship, learning and community engagement.

What we value

- We accept our **responsibilities for stewardship** of the land and will act accordingly.
- We **respect** the culture, values, innovations, practices and knowledge of Indigenous people.
- We **value** all our staff and will strive to be recognized as an employer of choice.
- We **value and respect** the contributions being made by our members, volunteers, partners, and the general community to further the conservation and advancement of abundant biodiverse landscapes.

What we do

Native Plants

Our wholesale and retail nurseries cater for small landscaping projects through to large-scale revegetation projects.

Two production nurseries and one retail nursery.
Capacity of over 320,000 tubestock per year.
Over 130 species grown or stocked.
Endemic seed collection.
Growing locally significant and threatened species.
Community volunteering opportunities.

Contract Services

Our commercial conservation services undertake activities consistent with the Landcare ethic and operates on a fee-for-service basis.

Weed management.
Bushland & riparian revegetation.
Carbon and environmental offsets.
Maintenance and monitoring.

Education and training

We provide a range of accredited and non-accredited courses and traineeships and public education.

Terrestrial & aquatic plant identification courses.
Technical & vocational training.
Community workshops and field days.
School visits & field days.

Consultancy

Our native vegetation and environmental management specialists offer advice on property management and compliance with government regulations.

Fauna and flora surveys.
Ecological restoration and management plans.
Pest management plans.
Compliance and waterway condition reporting.
Drone surveys and photography.



Retail

The Hinter Hub store is Noosa Landcare's retail nursery, gift shop and information center for local residents and visitors to the Noosa region. The Hinter Hub specialises in local native plants, garden products, artisan crafts and gifts. The Hinter Hub store provides a unique shopping experience helping transform local landscapes and strengthen community.

The proceeds from the Hinter Hub store feed back into Noosa Landcare's environmental projects across the wider region.

Who we work with

Our partners are individuals, groups and businesses that align with our values, goals, and long-term vision for the environment. When we collaborate we combine our skills, resources, and efforts to achieve our common objectives more effectively.

This year we have continued to support existing partnerships, and formed a significant number of new partnerships with organisations who have made a commitment as environmental investors.

Snapshot of 24/25 FY partners



Management Committee

Chairperson

Dr Kim Barnes
PhD Assoc. Proff in
Environmental Education.

Teacher and academic background in the school and university education systems. Extensive experience in sustainability and environmental education.

Vice Chairperson

Paul O'Hare
Honours degree in
Agricultural Science

Founding and life member of NDLG. Over 40 years' experience as a horticulturist with commercial industries. Chair of the Macadamia Conservation Trust.

Treasurer

Michael Shave
Bachelor of Business
(Accounting) and Arts
(History)

Extensive experience in financial and business consulting and local government executive positions.

Secretary

Geoff Black
BE (Civil), GradDipDVST,
DipCLM

Extensive background in land and community development and natural resource management.

Committee Member

Phil Moran
DipCLM

Extensive natural resource management background, representation on industry boards, community support. Co-owns Burrawingee Nature Refuge.

Committee Member

Wade Holmes
30 years Geotechnician

Owner/Manager Australian Soil Investigations. Long term Land for Wildlife member and passionate about preserving and protecting nature.

Committee member

Richard Barnes
MA Engineering & Business
Studies

Extensive corporate financial experience and Sustainable beef farmer in Noosa region.

Committee Member

Dr Ann Peterson
PhD Master Urban & Regional
Planning

Academic researcher and teacher. Involved in conservation in the region since the 1960s.

Committee Member

Brian Moore
Bachelor of Business (Banking
& Finance)

30 years in Executive Search across Asia Pacific. Strong advocate for protecting Noosa Shire's unique natural environment.

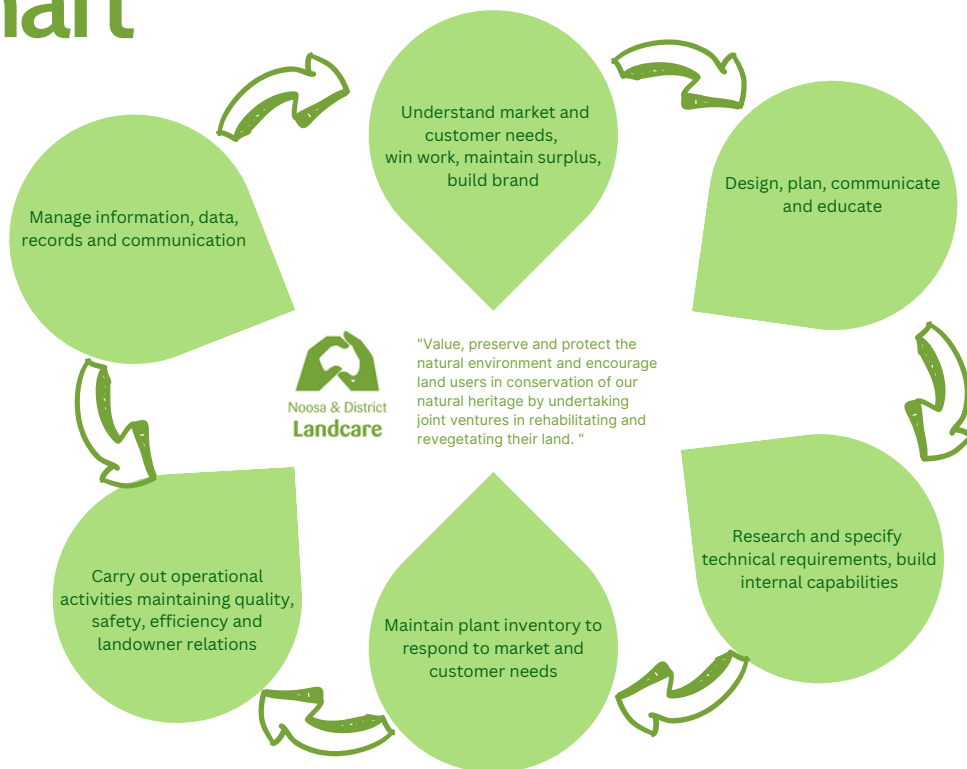
Committee Member

Beth Crawter
B.Arts – Drama, Journalism,
Ancient History

Team Leader, Research and Academic liaison, and university librarian.



Organisational Chart



Management Committee

Kim Barnes (Chair), Paul O'Hare (Vice Chair), Michael Shave (Treasurer), Geoff Black (Secretary), Dick Barnes, Beth Crawter, Wade Holmes, Phillip Moran, Brian Moore, Ann Peterson

Executive Management Team

Business & Partnerships Manager
Rachel Lyons

General Manager: Phillip Moran
Kim Maddison Acting GM Feb-May 2025
Sharon Wright -May 2025

Administration & Finance Manager
Kim Maddison

Operations and initiatives

Project Officers
Ilana Kelly
James Anderson
Nicole Palombi
Jamie Knight
Johnny Damhuis
Brent Whitworth

Field Operations Manager
Jen Coleman

Nursery & IT Manager
Owen Snowden
Nursery Officers
Lorin Burns
Nursery Assistant
Meg Searle
Adrienne Smith
& many volunteers

Hinterhub Managers
Lorin Burns
Bernice Rosier
Hinterhub Assistant
Narelle An
Imogen Pfister

Administration Officers
Jaymie Suares
Sophie Chegwyn
Administration Assistant
Georgie Tuffley
Kelly Blake

Project Site Supervisors: Darrin Barden, Jamie Knight, Johnny Damhuis, Nicole Palombi, Brent Whitworth

Field Supervisors: Perri Chapman, Ered Fox, Madi Glass, Nathan Marais, Harry Pearson, Richy Wielaard, James Anderson, Nikkita Fraser

Field Crew: Angus Alexander, James Anderson, Amelie Boyden, Perri Chaplin, Lexie Cleal, Ethan Cooper, Annie Daams, Bennett Ellis, Sunny Gardner, Alexander Lyle-Wilson, Dante Oliaro, Kailey Pearce, Imogen Pfister, Suzi Phillips, Tate Sorrensen-Bennett, Alex Standish, Kyle Taylor, Amy Anthony, Ben Behan, Ben Bloom, Brooke Farrar, Gaby Kiellerup, Georgie Tuffley, Gerald Kolts, Isaac Jackson, Jake Pearson, Jake Brown, Jake Liaropoulos, Jaxon Rainbow, Kai Ljubicic, Kelly Mutch, Nellie Kemp, Regan Weire, Sari Van Klaveren, Siana Shaw, Stefani Sivek, Tea Greenslade, Timothy Ellis.

Skilling Queenslanders for Work Supervisors & Team: Darrin Barden and Jamie Knight + 10 x Cert 1 Trainees (Conservation and Ecosystem Management)

RFC Housekeeping: Erika Murray, Amelie Boyden

Chairperson's Report

Words by Kim Barnes

This year marked a significant milestone for Noosa Landcare with the retirement of our long-serving General Manager, Phil Moran. Phil's leadership, mentorship, and unwavering dedication have shaped the heart of this organisation and left a lasting legacy across the Noosa region. While his retirement signals the end of an era, it is not a farewell—Phil remains a life member of Noosa Landcare. We wish him many joyful days ahead, whether tending his vegetable gardens, walking with Daisy, his beloved black Labrador, or fishing.



Farewell Celebration for General Manager, Phil Moran – Honoring his remarkable contributions to Noosa Landcare

A sincere thank you to Kim Maddison, who stepped into the role of Acting General Manager during the transitional period between Phil's retirement and Sharon's appointment. Kim managed to juggle that role along with her role as Administration Manager. Kim provided steady leadership and continuity, ensuring the organisation remained well-supported and operationally stable throughout this time. Kim is leaving us in December to explore other opportunities. She has been with the organisation for 22 years and in that time made a huge mark on the organisation. In Kim's own words, *"I have learned so much from everyone at NDLG including members, volunteers and stakeholders who became part of my every day – hard-work, kindness, honesty, loyalty, patience, dedication, determination, huge amount of knowledge sharing and support, acceptance, respect – the list goes on – you all give so much – thank you for what you gave to me. Many of you have become my friends. I hope this will continue long after I have departed NDLG."*

This year we also farewelled Rachel Lyons, our Business Development Manager, who accepted an exciting new opportunity with Noosa Council. Rachel was a valued member of Noosa Landcare for over a decade, contributing significantly to the development of large-scale restoration projects and driving innovation across many of our programs. Her leadership and commitment have left a lasting impact on the organisation.

During 2024-25, NDLG experienced considerable change, with key executives retiring or moving on to new opportunities. Several staff members also took well-deserved periods of leave. On behalf of MANCOM, we extend our heartfelt gratitude to the staff who stepped up, covered multiple roles, and ensured the organisation continued to thrive.



We welcomed new staff members. Our new GM, Sharon Wright hit the ground running and is doing a fantastic job in ensuring that NDLG thrives. Sharon has a long history of corporate jobs in not-for-profit conservation organisations and is ideally suited to her role in NDLG. We are grateful to Sharon for her very hard work in what has, at times, been a challenging year.

We also more recently welcomed Mal Smith as our new Business Development and Training Manager. Mal has also hit the ground running and is doing a great job.

Lastly, I would like to thank my friends and fellow MANCOM members for their stunning support and hard work in what has been a challenging year. Each and every member has stepped up, given a huge amount of time and ensured that NDLG was well managed. We are looking ahead. We will have a new strategic plan in 2026 and feel confident that NDLG will not only continue doing amazing conservation work but will grow and reach further.



Sadly, we are saying goodbye to Geoff Black, our amazing Secretary and friend. Geoff has decided to retire his pen and seek a quieter life with his lovely family. Geoff has been with NDLG for many, many years. We have leant heavily on him for his wisdom and knowledge of the organisation.

Michael Shave is also retiring, but fortunately only the job of Treasurer. Michael will be extremely hard to replace. He has provided NDLG with a great deal of financial support. Fortunately, Michael will stay with us on MANCOM.

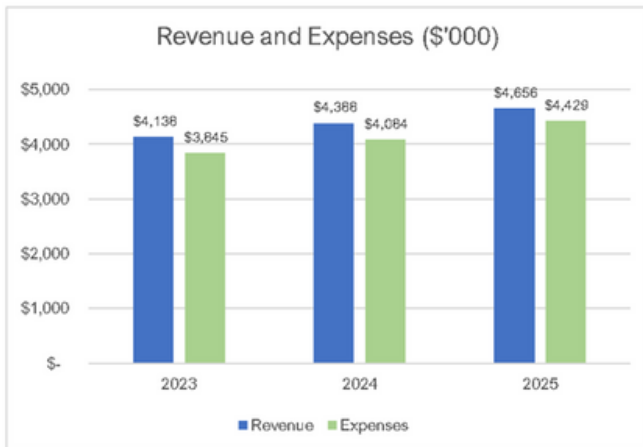
A big thanks to everyone who has supported us over 2025. **We look forward to an amazing 2026.**



Top photo: General Manager, Sharon Wright,
Middle photo: *Platylobium obtusangulum* - Common Flat-pea,
Bottom photo: Secretary, Geoff Black receiving a Queensland Day Award for being the Landcare Legend that he is - acknowledging his decades of involvement and contributions to Noosa Landcare.

Treasurer's Report

Words by Michael Shave



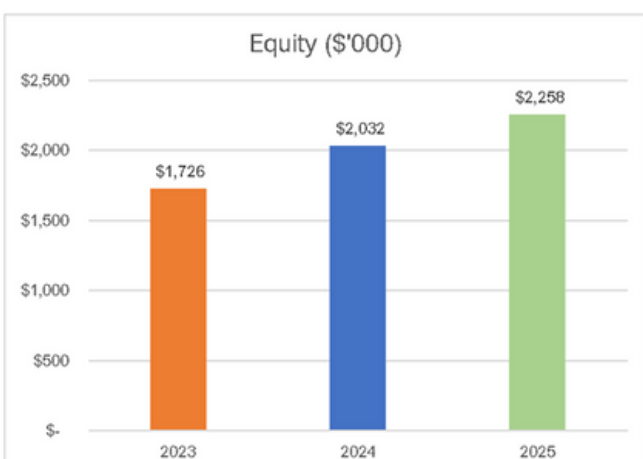
Noosa and District Landcare Group has delivered another year of strong financial performance, achieving an operating surplus for the fifth consecutive year.

Total revenues reached \$4.7 million (2024: \$4.4 million), reflecting continued project delivery and marking two successive years of 6% revenue growth – an excellent result for the organisation.

The operating surplus of \$228,000 (2024: \$228,000) and steady cash balance of \$2.4 million demonstrate sound financial management and prudent oversight. These consistent surpluses have strengthened NDLG's capacity to manage potential financial shocks or project-related revenue fluctuations, supporting long-term sustainability.

I am pleased to confirm that the auditor has once again issued an unqualified opinion on NDLG's financial statements, with no material issues identified. This outcome reflects the strength of our internal financial control systems, and I extend sincere thanks to Kim Maddison and her team for their ongoing effective financial governance.

I would also like to acknowledge Phil and Rachel for their exceptional contributions to NDLG's financial outcomes and broader success. Their expertise and commitment have played a vital role in maintaining the organisation's strong position, and we are all deeply appreciative of their efforts. They will be missed.





General Manager's Report

Words by Sharon Wright

Reflecting on a Transformative Year at Noosa and District Landcare

2025 is a significant milestone in the history of Noosa and District Landcare. This year marks the close of an extraordinary era, as we celebrate the contributions and bid farewell to two revered leaders and mentors, Phil Moran and Rachel Lyons.

Their retirement brings an end to a chapter defined by dedication, vision, and unwavering support for environmental conservation and community engagement throughout the Noosa Shire.

Honoring Phil Moran

Phil Moran has been much more than a leader—he has been a mentor and a friend to many across our region for over 25 years. His lovable larrikin spirit, combined with his deep care for both people and the planet, has set a standard for integrity, passion, and purpose in all aspects of our work. Phil's influence extends across generations of Landcarers, shaping their values and approach to conservation. His legacy is not only reflected in the tangible outcomes of our projects, but also in the warmth and generosity he brought to the organisation. I hope to follow in his footsteps over time.

Recognizing Rachel Lyons

The impact Rachel Lyons has had on achieving wide-reaching environmental conservation actions across Noosa and the broader Gympie and Sunshine Coast regions, cannot be understated. Rachel's love for animals and conserving their natural habitat comes through in everything she does. She is a fierce advocate for nature with an even fiercer intellect and a big heart. During my transition into the role of General Manager, Rachel has been incredibly generous with her time and sharing her wisdom. For this support, I am deeply grateful. I look forward to partnering with Rachel in her new capacity, confident that we will continue to drive positive change for our local environment.

Looking Ahead: A New Era for NDLG

As I embark on this journey as General Manager of the Noosa and District Landcare Group, I am committed to leading with grace and humility. My goal is to build upon the extraordinary legacy established by Phil, Kim, and Rachel, creating a positive future that is forward-thinking, proactive, and collaborative.

The challenges facing our planet demand our collective action and resolve. Together, we can empower the next generation of Landcarers and continue to make a lasting difference. Here's to our shared commitment and a promising road ahead.

Business & Partnerships Manager's Report

Words by Ilana Kelly on behalf of Rachel Lyons

Another year bites the dust!

The 2024/25 financial year saw the continuation of some of our largest and most ambitious onground projects to date:

- The third year of contracted large-scale hectares with Greenfleet as part of the Yurol Ringtail State Forest Koala Habitat Restoration Project. Over **207ha (82,872 trees)** were planted for the project during 2024/25 – an amazing feat by our crews in such challenging work conditions.
- The final year of the Koala Carbon Habitat Restoration Project at Dangerbridge Nature Refuge with Greenfleet and Queensland Trust for Nature. Crews undertook maintenance across the **70ha revegetation site** to aid the establishment of the **145,727 trees planted** as part of this project.

We continue to expand our portfolio of successful on-ground restoration projects, gaining valuable experience across a range of scales and landscapes throughout the region. The strong outcomes achieved across all sites reflect the dedication and teamwork of our entire crew—from seed collection through to site maintenance. Their collective efforts ensured we met project targets and achieved impressive survival rates, demonstrating the care and quality embedded in every stage of project delivery.

Major Achievements:

- **176 on-ground projects** undertaken.
- **300.36 ha** of targeted weed control undertaken.
- **204.19 ha** of revegetation undertaken.
- **116,236** planted in our region!
- Continued valued partnerships with our local major land managers and organisations – Noosa Council, Seqwater, HQ Plantations Queensland, Unity Water, Queensland Parks and Wildlife, Greenfleet, Department of Transport and Main Roads, Gympie Council, Sunshine Coast Council, Mary River Catchment Coordination Committee, the Kabi Kabi First Nations People, Unity Water, Healthy Land and Water, Burnett Mary Regional Group, Tourism Noosa, Landcare Australia, Queensland University of Technology, Reforest and Queensland Trust for Nature.
- Continued highly attended workshops and field days, with **44 workshops and community events held and over 650 people attending**.

In terms of grant submissions, we were selective due to the busy schedules of our on-ground teams. The organization submitted five grant applications, successfully securing two for delivery during the 2025-26 Financial Year. Additionally, our team submitted 16 tenders for contractual works during the 2024-25 FY, resulting in six successful tenders for on-ground works to be undertaken in the 2025-26 and subsequent years.

We continued to grow the consultancy arm of the organisation, delivering a diverse range of services including fauna surveys, technical reviews, and program development. This area of work saw significant expansion during the 2024/25 reporting period, with consultancy project activities emerging as a key area of diversification. Notable projects included:

- Completion of the Noosa Council Koala Conservation Plan review.
- Completion of additional Greater Glider Detection Dog Surveys for Moreton Council.
- Completion of Tiaro Bypass Greater Glider surveys.
- Thermal Koala Drone Surveys in partnership with Landcare Australia, Watergum Community and Queensland University of Technology
- Threatened Plants Offset for Lake MacDonald dam upgrade.
- Commonwealth Saving our Koala grant which includes a Citizen Science App, Corridor Connectivity Analysis and Landholder Engagement Booklet

This financial year was marked not only by significant on-ground achievements but also by notable organisational change. We farewelled our Business & Partnerships Manager, Rachel Lyons, as she transitioned into a new role at Noosa Council. We extend our sincere gratitude to Rachel for her strategic, innovative, and impactful contributions during her time with Noosa Landcare. They have left a lasting impact on the organisation's growth and direction.

Rachel has been a deeply respected mentor to many within Noosa Landcare and partnering organisations. Her unwavering dedication to our vision of a healthy and thriving local environment has been so inspiring to witness and be a part of.

In September 2025, we welcomed Mal Smith to the Noosa Landcare team as our new Business Development & Training Manager. Mal brings a wealth of experience in strategic growth, stakeholder engagement, and capacity building.



Photos above, left and right: Moreton Bay Greater Glider Surveys

Photo to left: Noosa Koala Connect Program Launch. and

Photo to right: Impressive habitat tree found during the Moreton Bay Greater Glider Surveys



In 2017/18 we formalised Noosa Landcare's Strategic Plan. Yearly evaluation of the plan through KPI's enables our Committee and organisation to gauge our effectiveness. To follow is the KPI report for the 2022-2025 Strategic Plan and the annual targets we have achieved.

Goal	KPI	Annual Targets		
		Achieved (22/23 FY)	Achieved (23/24 FY)	Achieved (24/25 FY)
ENVIRONMENTAL STEWARDSHIP Increase the area of abundant biodiverse landscapes under conservation management:	To directly revegetate >500 hectares by 2025	374ha	215ha	176ha
	To directly manage 300 hectares of weeds to assist natural regeneration by 2025	416ha	405ha	405ha
	To be working in partnership with 8 major land managers in on-ground projects in a formal capacity.	12 active partnerships (QPWS, NC, SEQW, SCC, HPQ, TMR, Unity Water, MRCCC, Greenfleet, QTFN, HBL, Tourism Noosa)	12 active partnerships (QPWS, NC, SEQW, SCC, HPQ, TMR, Unity Water, MRCCC, Greenfleet, QTFN, HBL, Tourism Noosa)	15 active partnerships (QPWS, NC, SEQW, SCC, HPQ, TMR, Unity Water, MRCCC, Greenfleet, QTFN, HBL, Tourism Noosa, John Holland Group, Reforest, NICA)
PROMOTING LEARNING Grow community awareness of the need to protect and build our biodiverse landscapes:	To run 12 events per year (in-person or on-line) and ensure workshop topics are relevant and connected to current landholder interests and on-ground projects. {Surrogate indicator}	47 events >770 people attended	49 events >1100 people attended	44 events >650 people attended
	To undertake 6 school visits / activities per year {Surrogate indicator}	6 School /University Visits	11 School /University Visits	6 School /University Visits
	To achieve 30 landholder advisory/ consultation visits per year to undertake assessments and assist property planning. {Surrogate indicator}	40 Gold Member visits	40 Gold Member visits	21 Gold Member visits
ENGAGEMENT AND ADVOCACY Promote the aims of the organisation through effective advocacy:	Participate and attend priority events (e.g. Council Planning Workshops) and appropriate committees to retain NDLG's relevance and contribution to regional planning, events and activities. (15 per year)	>40 events/ committees	>50 events/committees	44 events/committees
	Develop and advocate 7 clear priority programs for long-term engagement an investment with like-minded partners and landholders. Collate and/or undertake the necessary scientific basis for prioritisation and monitoring of progress.	7 Priority Programs: <ul style="list-style-type: none"> · Keeping it in Kin Kin · Cats Claw Creeper Crusade · Noosa Koala Habitat Restoration Activities · Threatened Plants Recovery Actions · Rainforest Restoration / Coxens Fig Parrot Habitat Enhancement · Trees for Tourism and Noosa Biosphere Trail Environmental Restoration · Lake MacDonald Source Protection Program 	7 Priority Programs: <ul style="list-style-type: none"> · Keeping it in Kin Kin · Cats Claw Creeper Crusade · Noosa Koala Habitat Restoration Activities · Threatened Plants Recovery Actions · Rainforest Restoration / Coxens Fig Parrot Habitat Enhancement · Trees for Tourism and Noosa Biosphere Trail Environmental Restoration · Lake MacDonald Source Protection Program 	7 Priority Programs: <ul style="list-style-type: none"> · Keeping it in Kin Kin · Cats Claw Creeper Crusade · Noosa Koala Connect · Threatened Plants Recovery Actions · Rainforest Restoration / Coxens Fig Parrot Habitat Enhancement · Trees for Tourism and Noosa Biosphere Trail Environmental Restoration · Lake MacDonald Catchment Creekcare Program




Photo: Jasmine Connors

Administration Team

Words by Kim Maddison

Administration and Finance Manager

The Administration and Finance team continues to provide essential support across customer service, financial management, human resources, and compliance for Noosa Landcare. With a dedicated team of four, the focus this year remained on streamlining internal processes, enhancing service delivery, and fostering a positive workplace culture.

The team is structured around four key functions: front desk and customer services, payroll and memberships, accounts, and HR, insurances, and general administration.

Key achievements included the successful implementation of a digital filing system across all departments, significantly reducing paper use and improving efficiency—thanks to Kelly for her support in this initiative and keeping it on track. In October, the appointment of a qualified HR Advisor marked a strategic step forward in workforce planning, with a draft HR Strategy and Action Plan developed to guide future improvements in staff engagement, performance management, and compliance.

The team also navigated transitions, farewelling Sophie and Jess in March and April respectively, both of whom contributed meaningfully during their tenure. We warmly welcomed Georgie, who has quickly become a valued team member. Kelly has been invaluable during the team changes, ensuring a number of tasks were covered – this contribution is greatly appreciated. Special thanks to Jaymie for her unwavering reliability and support across all functions—her consistency has been instrumental during this transition period.

Financial administration highlights included timely payroll processing, monthly financial reporting to the Treasurer and Management Committee, insurance renewals, and support for grant acquittals and budget tracking. Operational improvements were also made through the review and update of administrative procedures to align with best practices and regulatory requirements.

In a year marked by change, the Administration and Finance team demonstrated resilience, adaptability, and professionalism. Their collective efforts ensured the organisation remained compliant, responsive, and community focused. Sincere thanks to each team member for their contributions and commitment to continuous improvement.

Growing in the nursery

*Words by Owen Snowden,
Nursery Manager*

With the completion of several large projects this year, we were able to shift focus toward increasing species diversity and trialling new varieties in the nursery. Despite this transition, it remained a busy and productive year, with a total of **228,606 units sold**.

Among the new species trialled, *Pimelea latifolia*, *Cassinia subtropica*, and *Prostanthera spathulata* have shown strong performance and popularity. These are now in active propagation and will form part of our ongoing offerings.

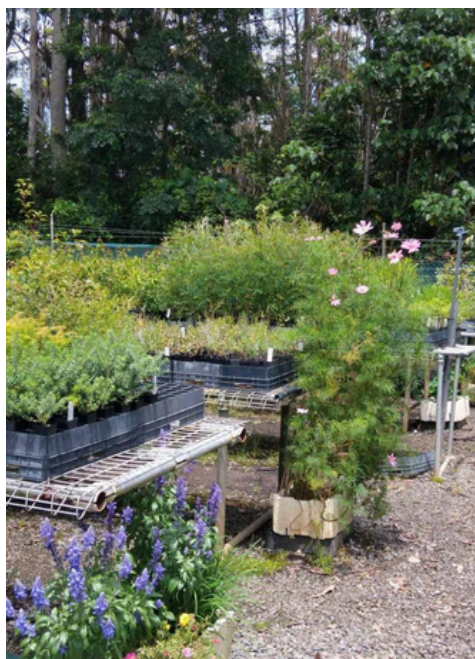
We welcomed Lexie Cleal to the team, who is now managing our Riparian nursery alongside the Tuesday Potters Club. We were also fortunate to have Judy Costello join as a new volunteer, adding to the strength of our dedicated volunteer base. In total, our **volunteers contributed an impressive 3,786 hours** across all aspects of nursery operations—an invaluable contribution to our success.

Training and community development remained central to our work, with four Certificate III trainees and two cohorts from the Skilling Queenslanders for Work program participating throughout the year. Meg Searles has taken on the supervision of the Skilling Queenslanders for Work participants in the nursery, leading to a notable increase in both productivity and work quality. Meg also introduced ecological improvements, including ground covers beneath benches to suppress weeds and planter boxes with flowering species to attract beneficial insects—both initiatives have been highly successful.

We were also grateful to receive a grant from the Australian Communities Foundation, which funded the installation of a solar-powered ventilation fan in our greenhouse. This sustainable upgrade will help regulate temperature and humidity during the summer months, improving growing conditions and reducing our environmental footprint.



Master Potters – Volunteers Noel and Judy



Meg's beneficial bug hotels at the end of the nursery bench



*Skilling Queensland
For Work trainees*

HINTER HUB

*Words by Bernice Rosier,
Hinter Hub Manager*

The Hinter Hub continues to serve as Noosa Landcare's public-facing retail store and native plant nursery, located in the heart of Pomona's central business district. Operating six days a week, the Hub occupies a heritage-listed building of special significance—it was the original nursery and administrative centre for Noosa Landcare in the early 1990s.

Established in December 2020 in its current form, The Hinter Hub has grown into a vibrant space that showcases native plants alongside the work of talented local artisans and artists. This unique blend of horticulture and creativity has made the Hub a valued destination for both locals and visitors.

2024–25 was another busy and successful year, with large volumes of native plants finding new homes in gardens and landscapes across the region. We expanded our range of hand tools and gardening essentials, offering products that are both functional and durable, catering to home gardeners and professionals alike. We extend our sincere thanks to our suppliers and the many gifted local makers whose products we are proud to stock.

Staffing changes brought both farewells and new beginnings. We thank Lorin for her support and contribution during the transition period, and warmly welcomed Erica, who now supports regular operations and Saturday mornings, as well as providing relief staffing. Erica has since taken up a role at our wholesale nursery, and we're pleased to have Rachel Price join the team in a regular capacity at the Hub.

These changes have provided an opportunity to review and refine our procedures, bringing fresh perspectives and improvements to daily operations. One such change was a new shop layout, with the counter now positioned at the front entrance—enhancing visibility and improving the experience for both staff and customers.

Our expanded book selection has been well received, particularly *The Gardener's Guide to Native Species on the Sunshine Coast* by Paul Ryan and Bernice Rosier, which we now offer as a welcome gift for new members.

Community outreach also grew this year, with invitations to speak at garden clubs and community groups. These engagements have helped raise awareness of The Hinter Hub, supported by printed postcards that guide attendees to our location. Many visitors have since come seeking tools and advice—and discovered our broader offerings of plants, books, and locally made crafts.

Customer feedback remains consistently positive, especially regarding our service, plant quality, pricing, and horticultural advice.

We extend our heartfelt thanks to the Management Committee, the broader Noosa Landcare team—including administration, nursery staff, and volunteers—for their ongoing support of The Hinter Hub.

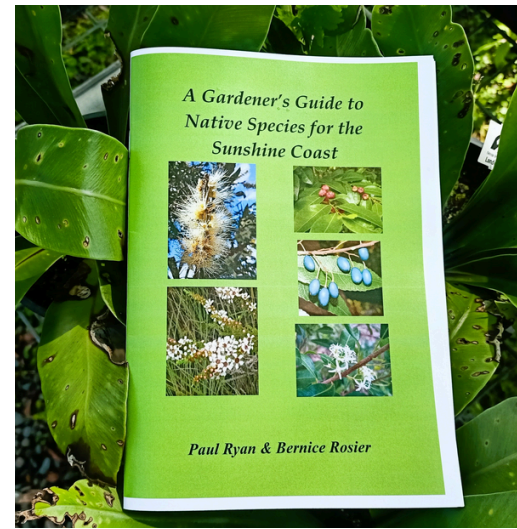


Photo top: Gardeners publication by Paul Ryan and Bernice Rosier, Middle photo: Bernice at the front of the Hinter Hub Store, Bottom photo: Garden tools and other essentials in stock.

On-ground program and project reports



The Noosa Koala Connect Program

Words by Ilana Kelly,

Program was developed by the amazing work of Rachel Lyons, Katrina Koutsellis, Sally Chudleigh, Jen Coleman, Owen Snowden and Natasha Rutherford.



Across the nation, but particularly in Queensland, koalas have seen a significant decline, mostly as a result of incremental habitat destruction and fragmentation and the effects this has on population health.

The Noosa community have recognised that protecting existing habitat, while important, is not enough to ensure the long-term survival of Australia's most iconic and loved species. We need and want to rehabilitate vital corridors and strategic habitat to facilitate greater numbers and ensure the long-term genetic health of our remaining koala populations.

Noosa Landcare has created numerous partnerships to implement a range of restoration projects of various scales to support the health of Noosa's koala populations over past decade, notable projects are the Yurol Ringtail State Forest and Dangerbridge Nature Refuge restoration projects detailed in this Annual Report.

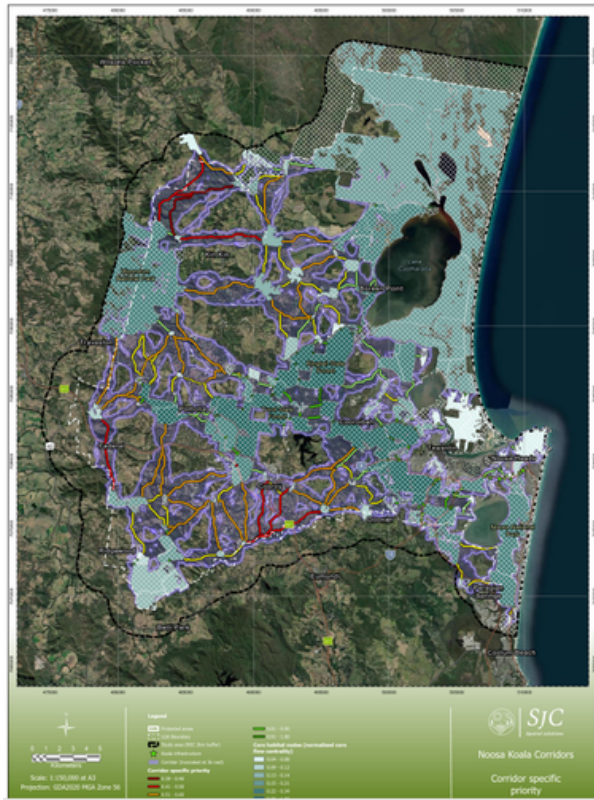
To build on the great work our community are doing to support the recovery and conservation of our local koala populations, Noosa Landcare partnered with Noosa Council, and Peppers Noosa Resort and Villas to **launch the Noosa Koala Connect Program**. This program was developed in the 24/25 Financial Year with the support of the Federal Government Saving Koalas Fund Community Grants (round 2).

The program combines applied science, community engagement, and habitat restoration to improve understanding of koala distribution and support long-term protection efforts.

At the heart of the program is a commitment to improve our knowledge of koala distribution, health and habitat connectivity in the Noosa region. A key component of developing the program was the use of thermal drone technology, to survey koala populations across 1,000 hectares of mapped koala habitat. The data collected was processed using artificial intelligence by Queensland University of Technology and contributes to the national Wildseek Program, which aims to standardize koala monitoring across eastern Australia. These insights feed directly into Wildnet, Queensland's species database, and helped inform the detailed koala corridor mapping we undertook as part of the program development.

Our partners





Noosa Koala Connect corridor mapping

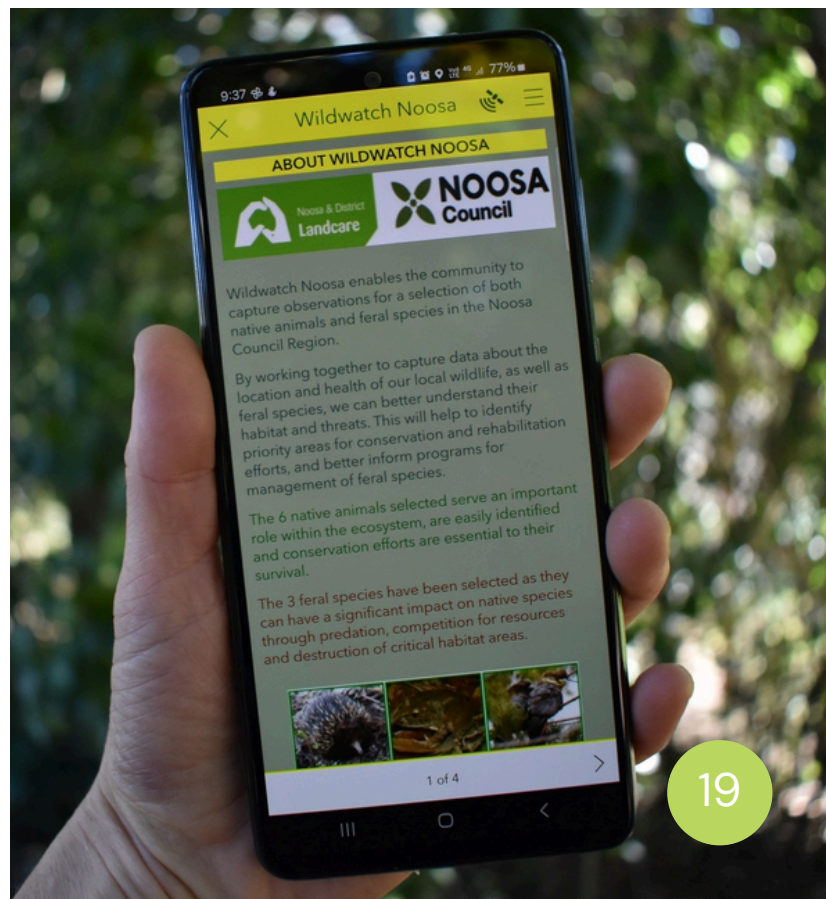
The detailed Noosa Shire-wide koala corridor mapping utilised updated vegetation datasets and GIS modelling tools. This analysis identified critical habitat linkages to guided restoration priorities, land acquisition planning, and development assessments in our region. The modelling considered landscape permeability, vegetation quality, and threats such as roads and urban development, ensuring that the proposed corridors were both ecologically viable and strategically located.

A third component of the program was the development of a Noosa-specific citizen science platform, modelled on Gympie's successful Wildwatch program. WildWatch Noosa allows residents, wildlife groups, and council staff to report koala sightings and health concerns, among reporting several other native and non-native species in the Noosa Shire. The platform includes a mobile app and web interface, enabling users to submit observations with photos, videos, and GPS data—even offline. Verified records will be integrated into live public dashboards, providing real-time insights into koala health, movement, and threats such as vehicle strikes and disease. These dashboards will support decision-making by council, rescue groups, and conservation planners into the future.

With the completion of detailed koala habitat mapping and the launch of a dedicated citizen science platform, the landholder incentive component of the Noosa Koala Connect initiative was established. This program is designed to empower private landholders to actively participate in koala conservation by offering practical support, expert guidance, and tangible incentives for on-ground habitat restoration. Its core aim is to strengthen habitat connectivity and ecological resilience across the Noosa region, with a particular focus on priority corridor areas identified through scientific analysis and spatial mapping.



Above: Launch of the Noosa Koala Connect Program with Noosa Biosphere Reserve Foundation, Noosa Council and Noosa Landcare



Right: Wildwatch Noosa App



Above: Koala Conservation Information Guide.

With support from the Federal Government's Saving Koalas Fund Community Grants, the program enabled the planting of **6,000 koala food trees across 10 carefully selected properties situated within key koala corridors** in the Noosa Shire during the 2024–2025 financial year. Looking ahead, a new partnership with Peppers Noosa Resort and Villas will help sustain and expand the program's long-term impact through yearly donations towards the restoration of priority koala habitat corridors throughout the region.

The final element of the Noosa Koala Connect program was the creation of the Koala Conservation Information Guide. This comprehensive resource provides an overview of koala history in the Noosa region, details about their habitat and breeding cycles, guidance on identifying sick or injured koalas, and instructions on what to do if one is found. It also includes practical information on koala food tree species, the significance of wildlife corridors, and best practices for managing koala habitat on private land.

To ensure broad community access, **1,000 printed copies** have been distributed across the Shire, and a digital flipbook version is available on our website.



Above: Private landholder food tree plantings supported by the Federal Government Saving Koalas Fund Community Grants (round 2).

Noosa Koala Habitat Restoration Project

Yurol-Ringtail State Forest

*Words by Jen Coleman,
Field Operations Manager/Project Officer*

Now in its fourth year, the Yurol-Ringtail Restoration Project continues to make significant strides in restoring native vegetation across former plantation landscapes. Initiated in 2020–21, this collaborative effort brings together Queensland Parks and Wildlife Service (QPWS), Greenfleet, Noosa Council, Noosa Parks Association, and the Kabi Kabi Aboriginal Peoples Cooperation, with the shared goal of re-establishing emergent and canopy species to rebuild the natural forest structure.

During the 2024–25 financial year, the project achieved major milestones:

- **77,900 trees planted across 194.75 hectares** in Ringtail State Forest
- **4,972 trees planted across 12.43 hectares** in Yurol State Forest

Species selection was guided by detailed site assessments and regional ecosystem mapping. A key finding was the lack of natural regeneration among Eucalypt and other canopy species—particularly those known to be important food sources for koalas. As a result, planting lists focused exclusively on canopy species, with a strong emphasis on Eucalypts.

In preparation for planting, extensive weed control was undertaken. Many areas were heavily infested with Lantana and pine wildlings, requiring intensive manual removal using chainsaws, brush cutters, and loppers. This challenging work was carried out on a large scale by the dedicated Noosa Landcare field crew, whose efforts have dramatically improved site conditions and given newly planted trees the best possible chance of survival.

A heartfelt thank you to our contracting crew for their dedication and hard work. Despite challenging conditions, especially during the warmer months, their efforts have been vital to the success of the Yurol-Ringtail Restoration Project.



Photos left and right: Field crew planting at Ringtail State Forest.

Our partners



Koala Carbon Habitat Restoration Project

Dangerbridge Nature Refuge

*Words by James Anderson,
Project Officer*

Established as a Nature Refuge in 2010, Dangerbridge—a 279-hectare former macadamia and cattle property along Kin Kin Creek—represents landowner Jenifer’s vision to restore native vegetation and create a lasting sanctuary for wildlife.

In 2020, the Koala Carbon Habitat Restoration Project began in partnership with Greenfleet, Queensland Trust for Nature, and the Queensland Government, with Noosa Landcare contracted to deliver on-ground restoration works. Since January 2021, our field crew has been transforming open paddocks back into native forest.

- **Stage 1 (2021–2022):** 57.89 hectares revegetated with 131,927 native tube stock, plus 11 hectares of assisted natural regeneration through targeted weed control.
- **Stage 2 (2022–23):** 11.5 hectares revegetated, including open pasture and a cleared macadamia orchard, with 13,800 trees planted.

In 2024–25, the focus was site maintenance, with our crew working herbicide-free to manage weeds using brush cutters—ensuring the long-term health and integrity of the site.

Ongoing collaboration with project partners and the landowner is shaping future plans, including the potential introduction of mid-storey species to further enhance ecological diversity.



*Pre-planting
2020*



*Planting site
2024*

Our partners





Keeping it in Kin Kin

*Words by Jamie Knight,
Project Officer*

The Keeping it in Kin Kin (KIIKK) is a community soil conservation program in the Kin Kin Creek subcatchment. Despite its relatively small catchment area, studies conducted between 2003 and 2012 identified Kin Kin Creek as the primary source of sediment entering Lake Cootharaba, impacting the health of the lake and Noosa River.

Analysing Light Detection and Ranging (LiDAR) imagery from 2008, 2015, and 2022, identified erosion “hotspots” across the subcatchment to help the program target priority areas for on-ground restoration and remediation efforts. Erosion management measures have included cattle exclusion fencing, off-stream watering points, and revegetation with deep-rooted native species.

In the 2024–25 financial year, the KIIKK project successfully revegetated four hectares of riparian zones across 15 properties, remediated three gullies, and installed 3.9 kilometres of waterway fencing to manage livestock access to priority reaches within the Kin Kin subcatchment.

Monthly ambient water quality monitoring continued to track water quality changes in the catchment. By June 2025, we had collected 54 months of data from 9 monitoring sites, and in January 2025, added 2 new upstream sites in the Eastern and Western Branches. All sites are located within 1 km of participating landholders, allowing us to better assess the impact of restoration and management decisions.



Riparian revegetation



Off-stream water points for livestock



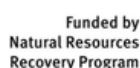
Kin Kin Community Information Session

Community engagement remained a key focus of the program. We co-hosted a Madeira Vine (*Anredera cordifolia*) management field day in partnership with the Noosa Landcare Cat's Claw Creeper Crusade program and Mooloolah River Landcare Mooloolah River Landcare's Sunshine Coast Biocontrol Facility. Madeira Vine is one of two vine species of priority in the KIIKK program, the second being Cat's Claw Creeper Vine (*Macfadyena unguis-cati*). The workshop saw 15 community members participate in the day.

A second event was held as an information session delivered to the Kin Kin Community Group, providing updates on the program and the works being delivered in the community.

The 2024–2025 financial year marked the first year of funding from the Queensland Government's Natural Resources Recovery Program (NRRP) and the second year of support from Noosa Shire Council's Multi-Year Environment Collaboration (MEC) program. The NRRP funding supports our most ambitious goal yet: a four-year plan to restore and protect 4 km of Kin Kin and Wahpunga Creeks.

Our partners



Lake Macdonald Catchment Creekcare Program

Words by Nicole Palombi,
Project Officer

Seqwater and Noosa & District Landcare successfully delivered the seventh consecutive year of the Lake Macdonald Catchment Creekcare Program. This year's focus was on strengthening engagement with active landholders and producing Best Management Practice (BMP) reports to support sustainable land stewardship. Six property visits were conducted, resulting in four BMP reports provided to landholders for review and implementation.

Noosa Landcare staff actively contributed to knowledge-sharing initiatives through participation in two Seqwater Peer-to-Peer workshops. The *Effective Communications* session in August explored strategies for enhancing Source Protection messaging, while the *River Walk* workshop in October, held in Kenilworth, highlighted collaborative large-scale restoration efforts across the Mary River catchment.

To support landholder capacity building, two targeted workshops were hosted:

Property Discovery Walk (September 2024): Held at the Moore property in Cooroy Mountain, this session covered bush safety, plant identification, snake awareness, and responsible chemical use. The workshop was facilitated by Project Officer Ered Fox.

Grazing & Soil Health Field Day (October 2024): Delivered in partnership with MRCCC at the McBain property, this event focused on pasture condition assessment, soil health improvement, and Pangola grass establishment. Following the workshop, Noosa Landcare established a Pangola nursery at its depot, offering free runners to local landholders to support improved pasture management.

On-ground works during Year 7 of the Lake Macdonald Catchment Creekcare Program delivered valuable outcomes across multiple sites. Key activities included the installation of over two kilometres of riparian fencing across two properties to protect waterways from livestock, with a portion funded through the Federal Government's Saving the Koalas Program via the Burnett Mary Regional Group (BMRG). Additional works included the construction of a cattle crossing to improve stock movement and reduce soil mobilisation, targeted erosion control to stabilise a series of significantly degraded and actively eroding dam overflows, and planting of over 1000 native tubestock to improve the stability and health of Upper Six-Mile Creek within the catchment.



Photo left: Grazing & Soil Health field day with the MRCCC team and landholder, Julie. Middle: Improved cattle crossing. Right: Riparian revegetation along Upper Six-Mile Creek.

Our partners



Cat's Claw Creeper Crusade

Words by Johnny Damhuis,
Project Officer

Cat's Claw Creeper (*Macfadyena unguis-cati*) has long been a priority for Noosa Landcare.

In collaboration with landholders, state and local governments, we've worked to combat this invasive vine—alongside Madeira Vine (*Anredera cordifolia*)—across the Mary and Noosa River Catchments. Both are aggressive “transformer” weeds, capable of smothering native vegetation and reshaping entire ecosystems.

Over the past five years, Noosa Landcare and Noosa Council have mapped the extent and impact of these species across the Shire. This led to the development of targeted Management Strategy Plans for Six-Mile Creek and Kin Kin Creek Catchments, guiding investment and on-ground control efforts.

These strategies formed the foundation of the Cat's Claw Creeper Crusade, a three-year program launched in 2023/24 in partnership with Noosa Council, Healthy Land and Water, Seqwater, and the Queensland Government Department of Environment and Science. The program is supported by Noosa Council's Multi-Year Environment Collaborative grant.

The Crusade invites landholders to report infestations and join a coordinated control effort. It provides resources for private property management, hosts field demonstrations, and delivers on-ground control in priority areas.

By the end of the 2024/25 financial year, the program had completed its second year, **treating 29.1 hectares of high-priority infestations across 16 sites**, addressing **5 new reports submitted** via the online portal.

To support community efforts in managing Cat's Claw Creeper and Madeira Vine, we hosted our second field day focused on control techniques for Madeira Vine. The workshop was co-facilitated by Jamie Knight from the Keeping it in Kin Kin project and Jessica Raintree from Mooloolah River Landcare. Jessica—affectionately known as the “Bug Lady”—introduced biocontrol options for both vine species, bred at Mooloolah River Landcare's Sunshine Coast Biocontrol Facility in Glenview.

Following the field day, we held a hands-on community working bee with the Roving Restorers program, offering practical experience in Cat's Claw Creeper control and direct support for landholders managing infestations on their properties.

As we close out the second year of the Crusade, we celebrate the growing network of informed and active landholders helping us slow down the grasp of Cat's Claw and Madeira Vine in our region. We look forward to continuing this vital work in the final year of the program and beyond.



Top photo: Contracting crew treating Cat's Claw Creeper vine. Bottom photo: Participants of the Madeira Vine demonstration field day.

Our partners



The Roving Restorers

The Noosa Chapter

Words by Ered Fox
Project Officer

Originally initiated by Hinterland Bushlinks, the Roving Restorers Program in Noosa has flourished through a collaborative partnership between Noosa Shire Council, Hinterland Bushlinks, and Noosa & District Landcare Group. The program supports ecological restoration on privately owned land that is protected under Voluntary Conservation Agreements, registered as Land for Wildlife, or designated as Nature Refuges.

The program delivers environmental benefits while fostering community engagement, providing hands-on education, promoting active lifestyles, and enhancing wildlife corridors—all at no cost to participating landholders.

During the 2024–2025 financial year, Roving Restorers held **20 working bees across 9 properties**, covering a total of 6.3 hectares. This included a visit with Paul Ryan and the Marcus Beach Bushcare Group. These events saw the involvement of **103 volunteers** who collectively contributed **412 hours of restoration work**, averaging five volunteers per event. A total of **1,140 native plants** were installed, helping to improve habitat connectivity and ecological resilience across the region.

To further support the program and enhance the volunteer experience, a range of new tools and equipment were purchased. These included mini mattocks, fold-up tables and chairs, a cordless drill and fan, gloves, and other practical items that have made restoration activities more efficient and enjoyable for participants.

“Hi Ered, I would like to thank you and all the Roving Restorers team plus, Amanda and Tony, that did such an amazing planting job under difficult conditions on Friday down on the foredune at BA48.

I was somewhat over ambitious thinking we could have got 300 plants in the ground even working past the usual cutoff time. But I feel we more than adequately covered the area with the approximately 270 plants we got in, complete with water crystals and stakes and then gave them all a good watering.

A special thanks to you for your tireless effort in getting those water containers down to the foredune along that sandy track, even with the hose extension.

Please pass on my thanks to the team.”

~Paul Ryan, Noosa Bushcare Group



Photo above: Planting of 270 native trees with the Marcus Beach Bushcare Group.

Our partners





Whats happening on the Mary

Words by Nicole Palombi,
Project Officer



Working with the team at the Mary River Catchment Coordination Committee (MRCCC), Noosa Landcare contracting services supported extensive on-ground restoration activities across **41 properties** within the Mary River Catchment. These efforts focused on stabilising riverbanks along the Mary River and its tributaries, with many works strategically located upstream of the Kenilworth and Goomong offtakes. This contributed to a measurable reduction in fine sediment entering our local water treatment facilities, with the additional benefit of reducing sediment from entering the Great Sandy Strait and Southern Great Barrier Reef during flood events.



A total of **10,389 native plants** were established across MRCCC Mary River projects, with 7,487 of these planted at a pile field site in Kandanga. The Kandanga planting presented logistical challenges due to significant rainfall and flooding in March of 2025, with approximately 246.6 mm recorded for the month. While the wet conditions offered ideal soil moisture for planting, they also posed risks to access and scheduling, requiring careful management.



You can see from the photo on the left that our team are a resilient bunch! We are very grateful for their hard work and dedication, despite challenging weather conditions.

Maintenance activities continued across previously revegetated sites, with a strong focus on weed control to help improve the health and resiliency of the plantings. Targeted efforts were directed at invasive transformer species such as Cat's Claw Creeper (*Dolichandra unguis-cati*) and Madeira Vine (*Anredera cordifolia*), alongside other high-risk weeds that threaten to overwhelm and outcompete native vegetation.

We are proud of our strong and collaborative relationship with MRCCC and grateful for the expertise of their team, whose guidance and coordination have been instrumental in achieving these outcomes.

We feel privileged to contribute to such a meaningful projects in the Mary River. Year after year, we continue to witness positive ecological changes throughout the river and its tributaries.

Photos top to bottom: Kandanga Pile Field planting, treatment of Elephant grass at a revegetation site, and Noosa Landcare contracting crew all smiles after finish planting at a pile field site.

Our partners



Great Barrier
Reef Foundation



Ecological Contracting Services

The Noosa Landcare Ecological Contracting crew operates throughout the Sunshine Coast region, delivering services to a wide range of clients including Sunshine Coast Council, Noosa Shire Council, Seqwater, Unitywater, John Holland Group and private landholders.

Through of fee-for-service model, the team delivers a range of ecological services, including revegetation, integrated weed management, property consulting and mapping.

Our work with Noosa Council and Sunshine Coast Council plays a vital role in supporting the management and restoration of council reserve assets. In the 2024–2025 financial year, we worked across **26 Noosa Council reserve sites**, contributing a total of **231 labour days**. For Sunshine Coast Council, our crews delivered services across **59 sites**, totalling **199 labour days**.

We deeply value the ongoing investment made by our community in protecting and enhancing the biodiversity and ecological health of our region. During the same period, we supported restoration efforts on **7 Noosa Shire Land for Wildlife properties** and **3 Voluntary Conservation Agreement properties**, helping landholders achieve their restoration goals. In addition, we undertook weed management and revegetation works across **13 private properties**, further contributing to the ecological resilience and health of the Sunshine Coast landscape.

During the warmer months, Noosa Landcare's weed management work with Seqwater continued at Lake Macdonald, focusing on the control of *Cabomba caroliniana*. Efforts were concentrated around lake entry and exit points—such as pontoons and ramps—to reduce the risk of this invasive aquatic plant spreading between water bodies via watercraft. The removal process involved raking loose material from the water surface and high tide lines into piles, which were then relocated to composting areas away from the water.

Work also progressed at Burgess Creek Bushland Reserve, aligned with the Lower Burgess Creek Restoration Plan developed by Noosa Council. Activities at this site primarily focused on targeted weed management to support broader ecological restoration goals.



Photos above: Ecological Contracting field crew.

Our partners



TREES FOR TOURISM. noosa

Total funds
raised
\$109,979

8,596
trees planted

Trees for Tourism is an environmental sustainability initiative by Tourism Noosa in partnership with Noosa Landcare. Noosa's major events play a big role in Trees for Tourism by donating \$1 for every paying event participant to the program and its projects.

A number of Noosa businesses also regularly contribute to the program. Events supporting Trees for Tourism include: Great Noosa Country Trail Walk, Noosa Classic, Noosa Enduro, Noosa Festival of Surfing, Noosa Eat and Drink Festival, Noosa Open Studios, Noosa Summer Swim, Noosa Triathlon, Noosa Alive, Noosa Ultraman, Sunshine Coast Comedy Festival, and Wild Women Adventure Race.

The 24/25 Financial Year saw two new planting projects undertaken for the Noosa Trail Network through the Trees For Tourism initiative, to support erosion management, shade and biodiversity along the Noosa Trail. Addition to this, revegetation maintenance continued across several sites, which was supported by the program in previous years.



Our partner

TOURISM
NOOSA
VISITNOOSA.COM.AU

30

Reforest Cooroy Mountain Wildlife Corridor

Last Financial Year, Noosa Landcare partnered with Reforest, a Brisbane-based social enterprise helping businesses and events integrate climate and nature-positive activities in their business, primarily through the funding of and participation in restoration project.

Noosa Landcare supported the planning and revegetation of Reforest's Cooroy Mountain Wildlife Corridor project, a 3.8 ha site in the Upper Six-Mile Creek catchment area of the Mary River near Cooroy Mountain.

In June 2024, 5066 native tubestock across 1.7 hectares were planted by Noosa Landcare, supported by the many hands of Reforest partnering businesses. A real highlight of Reforest's initiatives is the active involvement of client staff and their customers in these projects.

The goal for this project is to have over 10,000 native trees planted across the 3.8ha site.

The 2024/25 Financial Year focused on the maintenance of the 5,066 planted trees. It has been encouraging to see the success of the site. The plant survival count has met the project's key performance indicators. A total of 61 rainforest species from two distinct regional ecosystems were introduced to the site. Thanks to a natural spring that feeds into the area, no additional watering was required.

As the project enters its final year, our team has been working diligently to manage the pasture grasses ahead of the upcoming growing season.

We extend our sincere thanks to the hosting landholders, Lauren and Christian, for their ongoing support, enthusiasm, and commitment to restoration and conservation. We also gratefully acknowledge the contributions of Sunshine Coast businesses whose support has been fundamental in getting the trees in the ground!

Our partner **Reforest**



Slow Food Noosa Partnership

Slow Food is a global, grassroots, not-for-profit organisation founded in Italy in 1986 by Carlo Petrini. It was established as a response to the rise of fast food and the decline of local food traditions.

Slow Food promotes biodiversity, sustainable agriculture, and food education. It operates through a network of local chapters and activists in over 160 countries, working to defend cultural and biological diversity, influence food policies, and promote food education. The organisation also hosts events and advocacy campaigns to build solidarity and advance its mission of achieving good, clean, and fair food for all.

In 2022, Noosa Landcare partnered with Slow Food Noosa in their Regenerative Agriculture and Native Vegetation Enhancement Funding Program, a 2-year grant program aimed to create a resilient local food system, with social and ecological health at its core. The program supported Snail of Approval recipients of Slow Food Noosa (i.e. local producers) to undertake specific projects focused on productivity and ecological health on their farm.

Noosa Landcare proudly supported the administration of the grant program in partnership with the passionate and generous team from Slow Food Noosa.

Since 2022, near to \$40,000.00 was invested across 5 local farms in the Noosa and Gympie Region to support a range of on-farm projects. This included installation of waterway fencing, wetland rehabilitation, installation of farm infrastructure to improve grazing management and pasture health, creation of habitat corridors, purchase of specialised farm equipment and support with weed management in bushland areas.

All the projects were designed, co-funded and implemented by each producer.

Building on the success this program, Slow Food Noosa and Noosa Landcare ran a tree planting initiative during the 2023/24 Financial Year open to Slow Food members more broadly. This invited 10 local properties, including 7 Slow Food Noosa producers, plant **1,300 native trees!** The plantings were supported by Noosa Landcare Project Officer, Ered Fox, who provided expert guidance on species selection, site preparation, and ongoing maintenance. Ered worked closely with each landholder to ensure successful establishment of native tubestock on their properties.

In the 2024/25 financial year, Noosa Landcare completed the final plantings for landholders who were successful in the previous year's application round. The program received overwhelmingly positive feedback, with many participants sharing photos and updates on the health and growth of their plantings months after installation.

Following this success, applications for a second round of plantings were opened to Slow Food Noosa members and producers during the 2024/25 financial year. Planting is already underway across 8 local properties, continuing the momentum of this impactful community-led restoration effort.

We extend our heartfelt thanks to all the local producers and landholders who have actively participated in the inspiring initiatives led by Slow Food Noosa. We also wish to express our sincere appreciation to Slow Food Noosa—particularly Rod and Karyn Lees—for their outstanding efforts in championing and supporting local producers, and for their unwavering commitment to fostering a healthier local food system and environment.



Training

Skilling Queenslanders for Work Works Skills and First Start traineeships

The training program has achieved remarkable success over the past year, providing valuable skills and employment opportunities to participants. This report highlights our key achievements, the impact of our programs, and the support received from our partners.



Skilling Queenslanders for Work program

Supervisors: Jamie Knight and Darrin Barden.

Participants: 20 individuals employed under Work Skills Traineeships.

Certification: All participants completed a Certificate I in Conservation and Ecosystem Management.

Outcomes: Several trainees have transitioned to longer-term employment at Noosa Landcare and others into senior trainee positions. Impressively, ~95% of trainees secured further employment following the program's completion in 2024-25.

First Start Program

Supervisor: Jen Coleman.

Participants: 12 trainees employed under the First Start program.

Certification: Trainees are studying for a Certificate III in Conservation and Ecosystem Management.

Outcomes: Eight trainees have successfully graduated, with an additional four expected to complete their training within the next Financial Year.



Both programs have been made possible through the generous support of the State Government's Skilling Queenslanders for Work Program with Noosa Landcare serving as the Community-Based Organisation managing the projects, whilewhile Ballistic Training Services provide accredited training as the Registered Training Organisation (RTO), and Busy at Work as Apprentice Connect Australia Provider (ACAP) register the trainees in the Australian Apprenticeship Services frameworks.

The high employment rate among trainees demonstrates the effectiveness of our training programs in preparing participants for the workforce. Beyond employment, these programs have contributed significantly to conservation and ecosystem management efforts within the community. Looking ahead, we aim to expand our training programs, increase the number of participants, and enhance the support services provided to trainees.

Our training program has made significant strides in empowering individuals with the skills and opportunities needed for successful careers in conservation and ecosystem management. We are grateful for the continued support from our partners and look forward to building on this year's successes.



Photos above: Collection of photos of Cert 1 and 3 traineeship groups over the 24/25 Financial Year undertaking field work and training.

Our partners



530
members

Our Community

Thank you to all our wonderful members and volunteers



Over
3,577 hrs
by Vols

Valued at
\$160,965

Current Life Members

Barry Craig
George Kootoofa
Paul Steels
Dick Barnes
Paul Ryan
Nancy Dittrich
Darrin Barden
Phil Moran

Paul O'Hare
Mary Neil
Jan Hutchinson
Hazel Ross
Eileen Ciolac
Kim Maddison
Noel Tolson
Mary Montieth

Events

At Noosa Landcare, we're passionate about connecting with our community through the sharing of knowledge, stories, and lived experience.

Throughout the year, our workshops, field days, and monthly talks have explored a rich variety of topics—from native flora and fauna to land management and natural history.

Here are a few snapshots capturing the highlights of a wonderful year of events.

44
EVENTS

Over
650
attendees





Transforming the landscape together.



Noosa & District
Landcare

PO Box 278, Pomona Qld 4568
6 Station Street, Pomona
Ph: (07) 5485 2468
info@noosalandcare.org
www.noosalandcare.org

