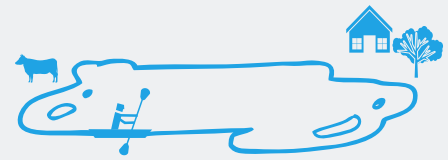


WATER SUPPLY CATCHMENT PROTECTION PROGRAM



LAKE MACDONALD

Looking after the health of the land and waterways within our dam catchments is critical to a safe water supply and providing water for life.

We believe it is vital we work in partnership with our neighbouring landholders and the broader community to look after the catchments we live, work and play in and protect our precious water resources.

Seqwater and Noosa and District Landcare have partnered to better protect the quality of water in the Lake Macdonald catchment, through the **Water Supply Catchment Protection Program**.

This program aims to bring landholders and local experts together to share knowledge and find ways to minimise sediment, nutrients and pathogens, such as livestock faeces, from entering the lake.

The program is also an opportunity for landholders to improve the productivity and health of their properties.

Partnering landholders will be provided financial assistance and support to implement improvement strategies such as, but not limited to:

- installing waterway fencing,
- installing off-stream water sources for livestock e.g. water troughs, tanks, pumps and fittings,
- vegetation planting in waterways and along the lake front, and
- erosion repairs, and
- weed control.

JOIN THE PROGRAM TODAY

Contact Noosa Landcare Project Officer, Nicole Palombi for more information and to book your FREE property consultation.

(07) 5485 2468

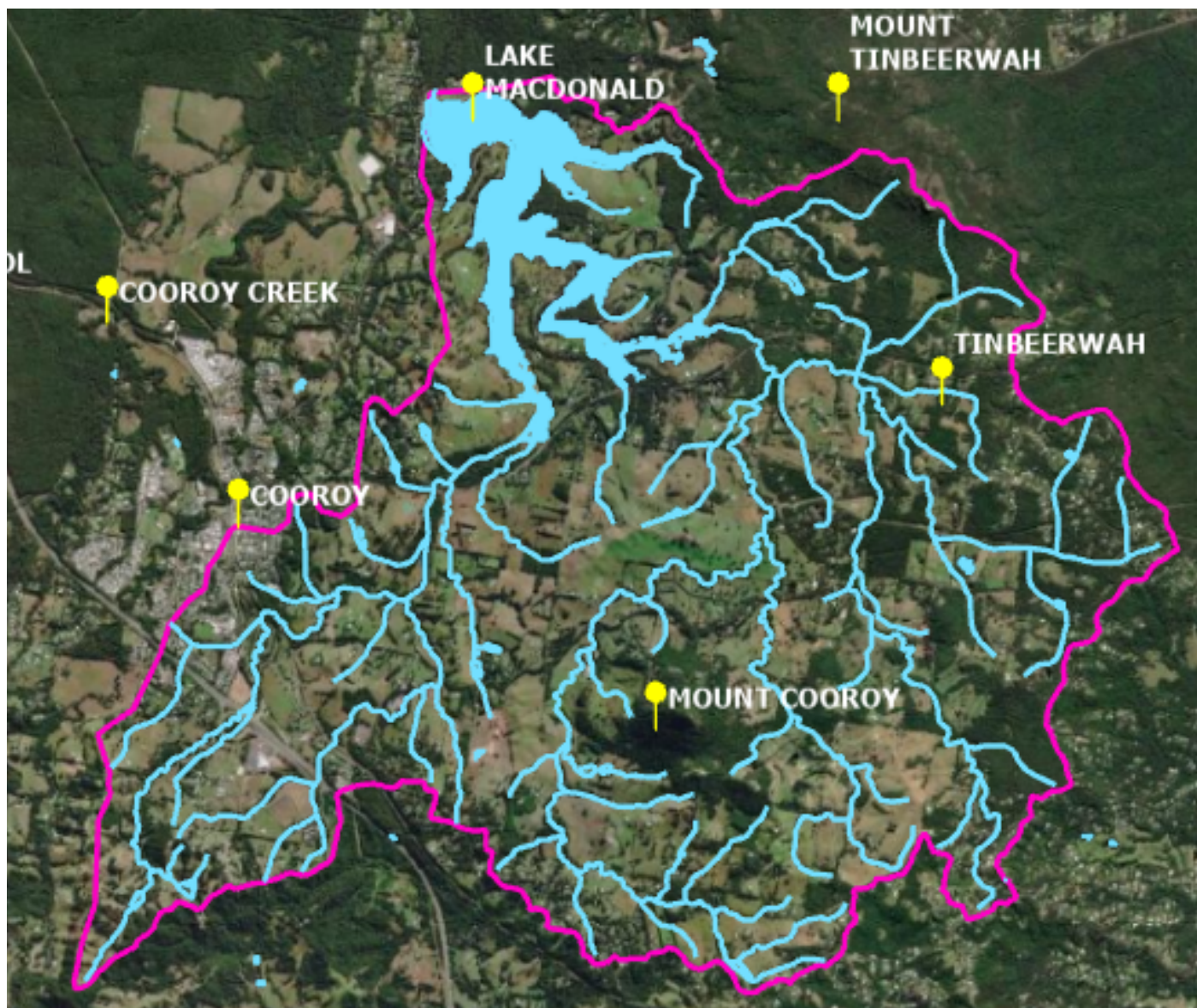
nicole.palombi@noosalandcare.org



WATER SUPPLY CATCHMENT PROTECTION PROGRAM



You may be eligible for funding support if your property is located within the following catchment boundary.



JOIN THE PROGRAM

Contact Noosa Landcare Project Officer, Nicole Palombi for more information and to book your FREE property consultation.

(07) 5485 2468

nicole.palombi@noosalandcare.org

