

# Keeping it in Kin Kin

## Community Soil Conservation Program



Soil erosion is one of the world's major environmental issues. Despite being a natural process, it is accelerated by land practices such as land clearing, livestock management and soil cultivation. Here in the Noosa, we are left with a legacy of land clearing along creeks and steep hillsides that continue to erode today.

The Kin Kin sub-catchment has been identified as a key contributor to fine sediment pollution and nutrient loads into the Noosa River Catchment. The very steep headwaters of the catchment combined with the underlying moderate to heavy fine clays of the 'Kin Kin Beds' see the area prone to slipping. While high velocity flood events are impacting the stability of the catchments waterways.

In 2017, Noosa Landcare and partners undertook a study to identify and prioritise key areas contributing to soil loss in the Kin Kin catchment. The study showed that for the catchment of only 22,000ha, over 2.4 million cubic tones of soil, or the equivalent of 191, 284 large dual axel soil delivery trucks filled with soil, was **mobilised** between the 2008 and 2015 period analysed.

This initiated the **Keeping it in Kin Kin** program, a catchment management and soil conservation program, which aims to bring landholders and local experts together to share knowledge and find ways to minimise sediment mobilisation and create resilient and healthy landscapes.

The program is also an opportunity for landholders to improve the productivity and health of their properties. Partnering landholders may be provided financial assistance and support to implement improvement strategies such as, but not limited to:

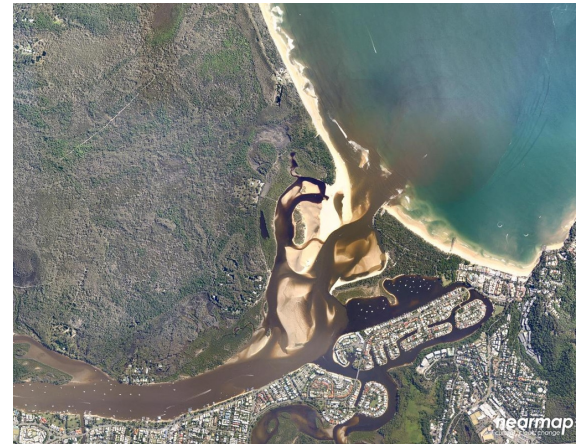
- Waterway and gully livestock fencing,
- Installing off-stream water sources for livestock,
- Vegetation planting in waterways, gullies and hill slopes,
- Erosion remediation, and
- Management of environmental weeds, such as Cats Claw Creeper (*Macfadyena unguis-cati*) and Madeira vine (*Anredera cordifolia*).

The program also provides landholders access to resources and local workshops and field days covering land management topics, such as rural erosion control, waterway health, livestock and grazing management and more.

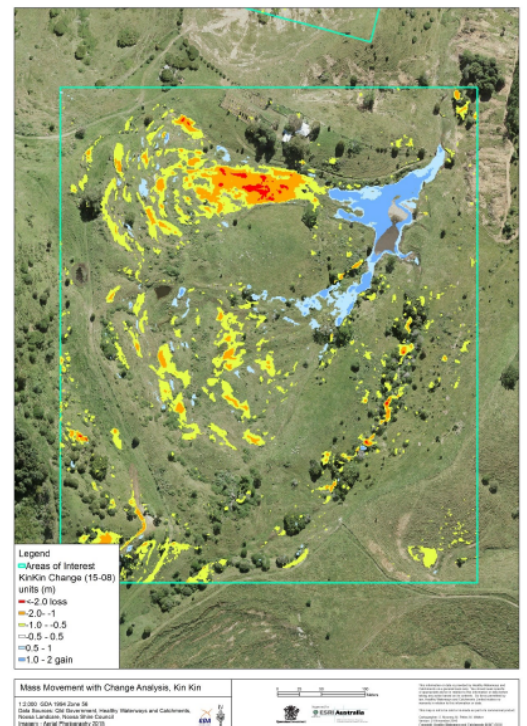
Proudly supported by:



Australian Government



Sediment plume entering Laguna Bay from the Noosa River during a 2013 flood event.



Erosion Type "Mass Movement" in Kin Kin, identified in the 2017 study. High levels of deposition observed in the valley and entering waterway.

**JOIN THE PROGRAM TODAY**

Contact Noosa Landcare Project Officer, Jamie Knight for more information and to book your FREE property consultation.

(07) 5485 2468

[jamie.knight@noosalandcare.org](mailto:jamie.knight@noosalandcare.org)

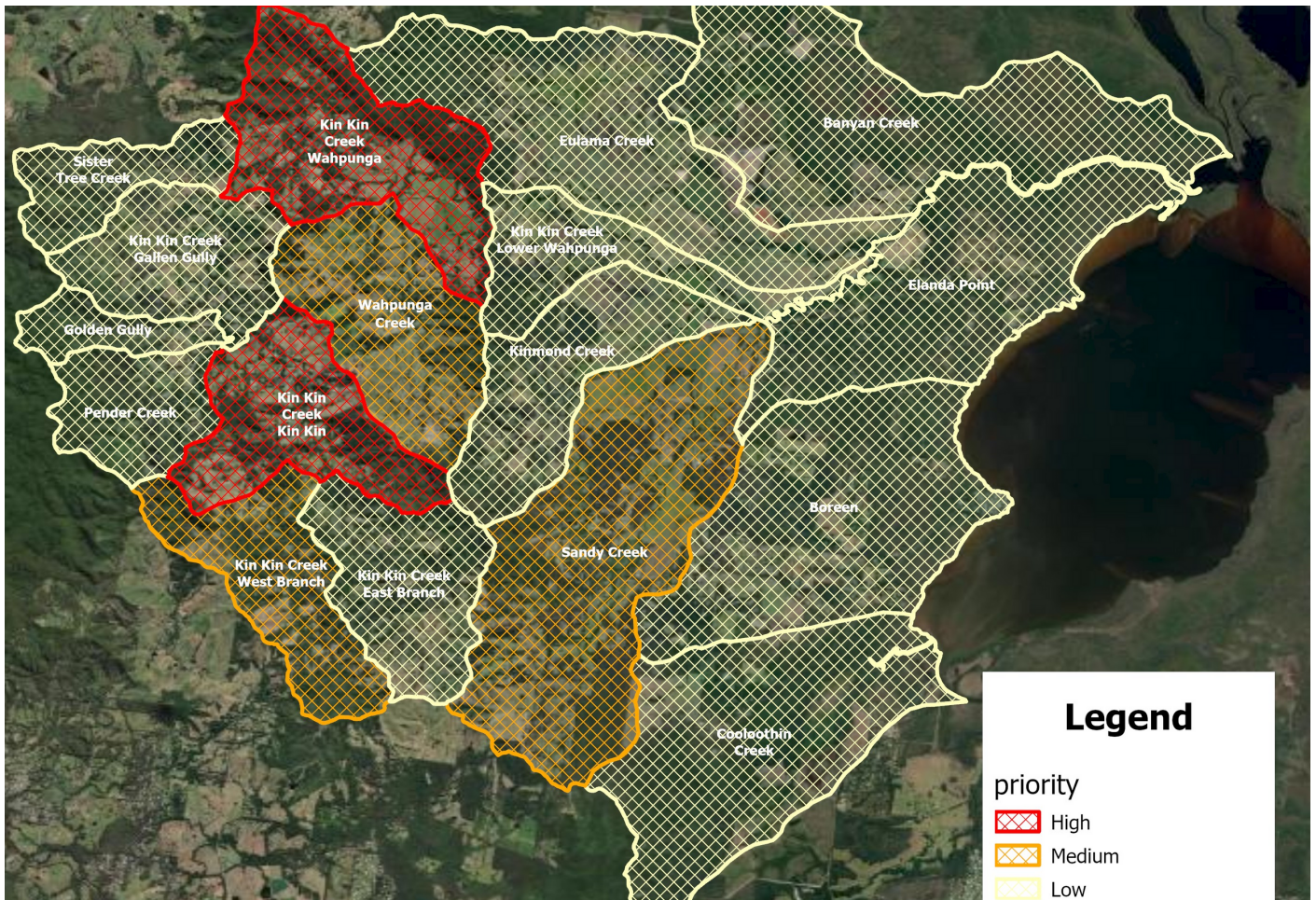


# Keeping it in Kin Kin

## Saving soil in the Kin Kin catchment



You may be eligible for funding support if your property is located within the following high and medium catchment priority areas. Properties outside these priority areas with significant erosion may be eligible for funding support based on site assessment.



Proudly supported by:



### JOIN THE PROGRAM TODAY

Contact Noosa Landcare Project Officer, Jamie Knight for more information and to book your FREE property consultation. (07) 5485 2468, [jamie.knight@noosalandcare.org](mailto:jamie.knight@noosalandcare.org)